

# Keeping Children Safe with School Zone ASE

School Zones are one of the most sensitive areas when it comes to speeding and speeding related injuries. According to the Transportation Research Board, 25,000 children are injured annually and more than 100 killed on average while walking to or from school, all as a result of speeding.

## School Zone Crash Facts



- According to new study by the NHTSA an average of **111 fatalities per year** occur in school transportation related crashes, 70 percent of which were occupants of other vehicles.
- On average, there are **5 teen pedestrian deaths each week** in the U.S. school zones. The pedestrian death rate for teens aged 12-19 has increased by 13% since 2013.

- In California, San Francisco was reported to have 3 of the deadliest elementary schools for school zone crossing with a total of **624 car accidents between those 3 locations in one year**.
- According to a survey released by AAA, Colorado and Georgia have **the highest percentages of drivers admitting to speeding** in active school zones, with 57% and 47% respectively.
- In Manatee County, Florida, new traffic cameras recorded **over 6,500 speeding incidents in school zones** within just a month. Similarly, the Colorado State Patrol reported an increase in speeding citations in school zones in 2023

## Making a small difference can make ALL the difference

**-53%**

less injuries to vulnerable road users at -7.5 MPH

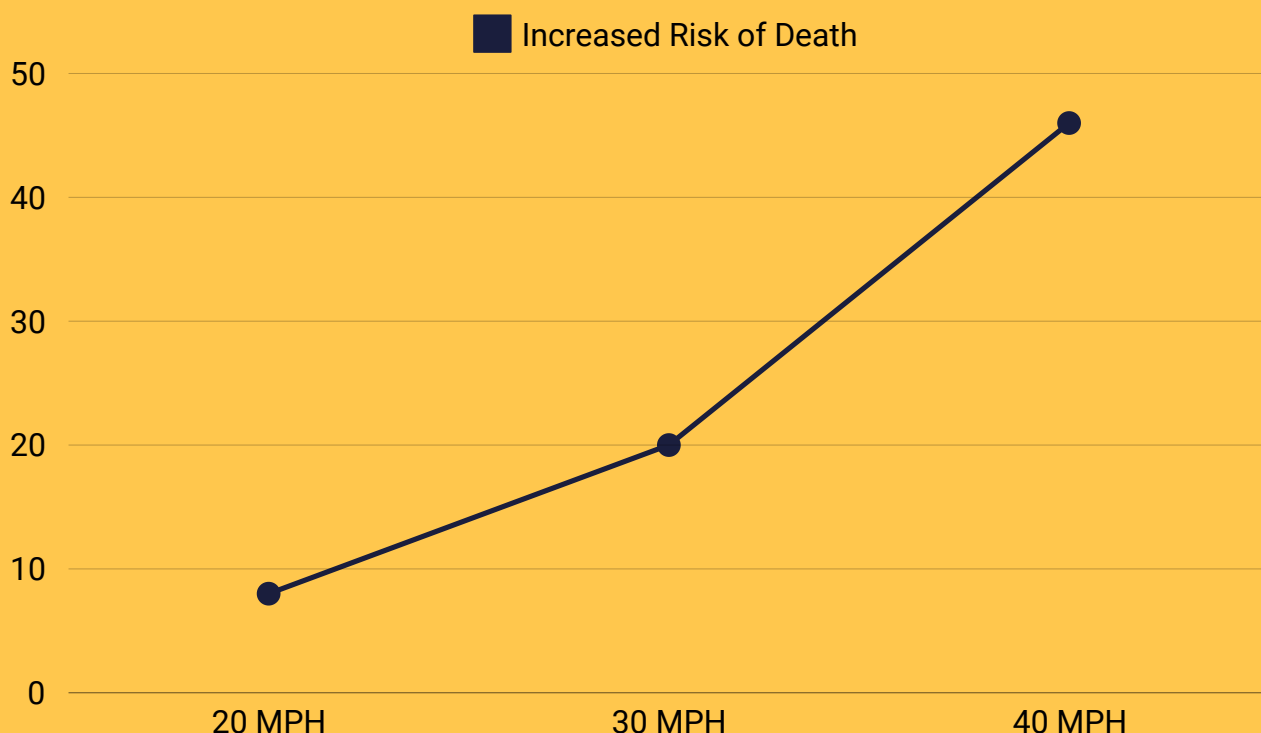
The results of an independent safety evaluation revealed fatal and injury collisions were significantly reduced by 45.3% and injuries to vulnerable road users were reduced by 55.3% when speeding was reduced by approx. 7.5 mp/h.

The same study evaluated, for every 0.6 mp/h reduction in mean speed, fatal and injury crashes were reduced by about 4%,

**-4%**

reduction in fatal and injury crashes for every 0.6 mp/h speed reduction

AAA Foundation reported: the likelihood pedestrians getting killed by a vehicle driving 20 mp/h is at 8%, but increases to 20% at 30 MPH and even 46% at 40 mp/h.



Connect with us to learn more:



<https://elovate.com>



[info@elovate.com](mailto:info@elovate.com)

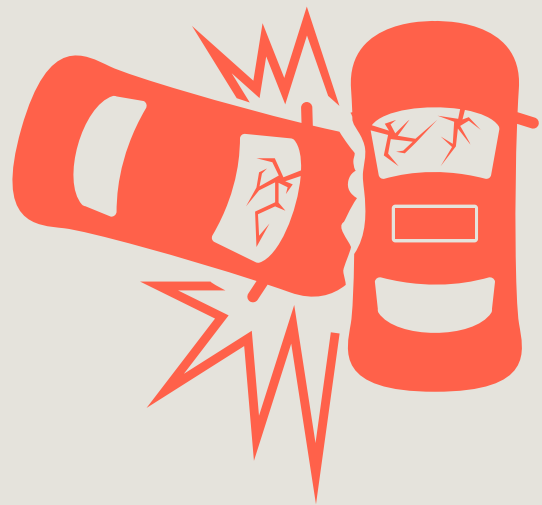


[Elovate on LinkedIn](#)

# Keeping Children Safe with School Zone ASE

Speed cameras are considered one of the most effective solutions to lower speeding and prevent accidents:

A CDC report titled "Automated Speed-Camera Enforcement" found that speed cameras reduced total crashes anywhere from 8 percent to 49 percent, and fatal and serious-injury crashes from 11 percent to 44 percent in studies that compared pre- and post-crash data collected near camera sites.



up to -44%

less fatal and serious-injury crashes



-72%

reduction in speeding

In 2019, the New York City state legislature granted NYC DOT the authority to deploy speed cameras in 750 school speed zones on weekdays between 6 AM and 10 PM.

Speeding at fixed speed camera locations has dropped 72 percent on average. Crashes with injuries dropped 8 percent during hours of speed camera operation.

As of May 2022, there are over 2,000 operational cameras in New York City

Elovate's School Zone speed enforcement program in Fairfax, Virginia with an initial 10 cameras installed in January 2023, lead to a average speed reduction of initially between 16 and 27 percent and a further reduction of 14 to 19 percent by Feb 2024.

The program is now being expanded to 50 cameras and a planned further expansion by an additional 30 speed cameras in 2027.



-48%

average speed reduction

Connect with us to learn more:



<https://elovate.com>



[info@elovate.com](mailto:info@elovate.com)



[Elovate on LinkedIn](#)